




Flat 13, Three Crowns House, South Quay, King's Lynn PE30 5DT

£110,000

 2  1  1

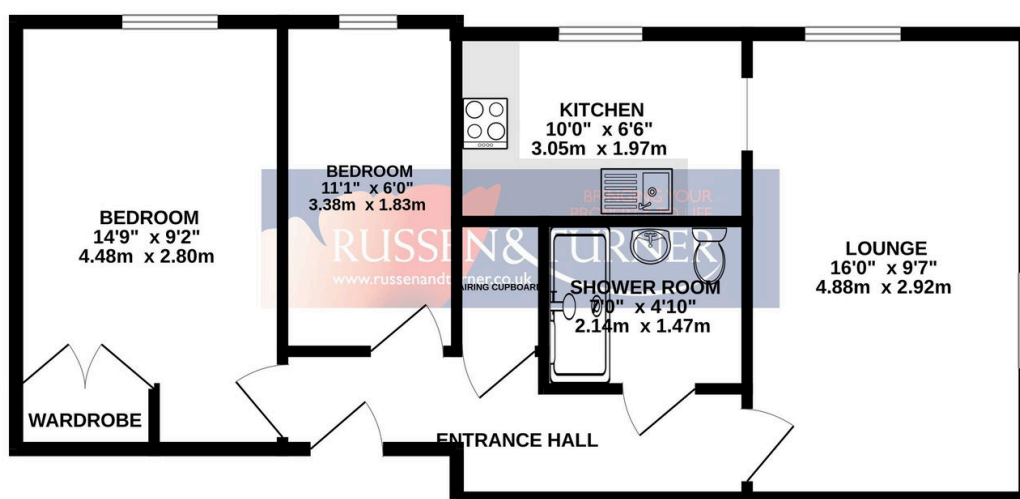


This beautifully updated, over 55's apartment is available to the market with no onward chain and offers a 'ready-to-move-in' home in the heart of historic King's Lynn. Freshly decorated with new flooring, kitchen and bathroom, this light & airy home boasts views over the stunning Clifton House and is available for immediate viewing.

Key Features

- 1st Floor apartment
- 2 Bedrooms
- New shower room
- Views over Clifton House
- Town centre
- Over 55's
- Newly decorated
- New kitchen
- No chain
- Next to the river

GROUND FLOOR
537 sq.ft. (49.9 sq.m.) approx.



TOTAL FLOOR AREA : 537 sq.ft. (49.9 sq.m.) approx.

Whilst every attempt has been made to ensure the accuracy of the floorplan contained here, measurements of doors, windows, rooms and any other items are approximate and no responsibility is taken for any error, omission or mis-statement. This plan is for illustrative purposes only and should be used as such by any prospective purchaser. The services, systems and appliances shown have not been tested and no guarantee as to their operability or efficiency can be given.
Made with Metropix 6/2024